

► Shower Stool »STANDARD« with Cut-Out

► User manual

Cleaning / Disinfection

- Do not use sharp or abrasive objects or cleaning agents for cleaning.
- Any impurities that are recognizable should be removed immediately to avoid drying.
- Use only mild, commercially available household cleaners and soft wipes or sponges. If necessary, the shower stool can be disinfected by wiping with a commercially available, chlorine-free disinfectant.

Important: please observe the application regulations of the manufacturer.

⚠ Safety instructions:

- The shower stool must only be used for the purpose described above while sitting, do not stand on the seat!
- The shower stool must only come into contact with uninjured skin and must be used with the help of a caregiver!
- The shower stool must not be used if the user cannot control her/his balance while sitting, risk of falling!
- Please note the maximum load of 110 kg
- All legs must be set at the same height, otherwise there is a risk of falling!
- Do not use body care and cleaning agents containing fat or oil, danger of slipping and falling!
- Use in the temperature range of 10-40 °C, do not use in the sauna!
- If parts of the shower stool are bent, deformed or damaged, the stool must not be used (any longer)
- For optimum safety, check the rubber feet regularly and replace them if necessary

Warranty:

According to the legal warranty claims. From the warranty excluded are damage by inappropriate use, normal wear or use as well as defects, that affect the value or usability of the device only insignificantly. Technical changes, alterations and extensions and improper maintenance Work lead to expiring the warranty and the product liability.

We reserve ourselves changes, which serve the technical improvement.

Shower Stool »STANDARD« with Cut-Out

Art. No. 10 300 / without Backrest

Art. No. 10 310 / with Backrest



Sundo Homecare GmbH,
Bahnhofstraße 13, DE-30916 Isernhagen, Internet: <https://www.sundo-homecare.de>



Valentine International Ltd., 8th Floor, No. 149, Sec 2, Ta Tung Road,
221 Hsichih District, New Taipei City, Taiwan R.O.C.



Y. Sung Handelsvertretung, Toulouser Allee 9, DE-40211 Duesseldorf, E-Mail: y.sung@t-online.de



sundo
HOMECARE

sundo
HOMECARE

► Shower Stool »STANDARD« with Cut-Out

Intended use:

The standard shower stool is a medical device and is designed as a seating and stand-up aid for people who have a limited stability/function of the lower extremities. The shower stool with hygiene cut-out may facilitate or enable personal care in the shower, but must only be used by persons which can independently control their balance while sitting. The shower stool should only be used by support of a caregiver.

Indication:

Limited standing ability, limited stability, general weak conditions

Contraindication:

dizziness, impaired balance function, lack of trunk control, confusion, insufficient physical or mental abilities for use

Article description / Versions:

The shower stool can be used for a comfortable and safer performance of body care while sitting in the shower. It is made of aluminium and plastic and can be adjusted in five different seat heights. The seat is equipped with a non-slip surface, the hygiene cutout facilitates the personal care and intimate hygiene. There are different versions (see technical data), the selection of the appropriate stool should be done together with the specialist staff. Testing, assembly and instruction in use must only be carried out by authorized, trained specialists. The article should only be used by support of an accompanying person/caregiver.

The shower stool is designed for domestic use, must only be used with intact, uninjured skin and must not be used across patients. Another or different additional use than the mentioned above is not intended. For the resulting damages, there is no liability on the part of Sundo GmbH or the manufacturer, the risk is borne exclusively by the user. Any serious incidents occurring in connection with this product must be reported to the manufacturer or the competent authority without delay.

Before use / maintenance:

First, read the present instruction manual completely and keep it up until the end of the product life. Before first and each use please check if the product is undamaged. Also check the safe position of the shower stool before each use, check the fittings and stability of the seat regularly. In case of signs of damage or wear, the "Standard Shower Stool" must not be used (any more). Further maintenance is not required in compliance with the safety instructions.

Scope of delivery

Item no. 10 300: 2 aluminium bases, 1 plastic seat, 2 stabilization rods, 5 long screws, 2 short screws, 8 washers, 1 nut scope of delivery

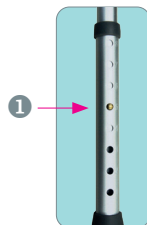
Item no. 10 310: 2 aluminium bases, 1 plastic seat, 2 L-shaped brackets for the backrest, 5 long screws, 6 short screws, 12 washers, 1 nut

Required tool: 1 Phillips screwdriver, 1 wrench size 10

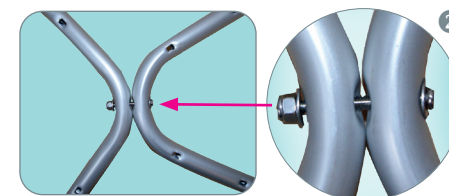
Assembly:

1. The item may only be assembled by authorized, trained personnel.

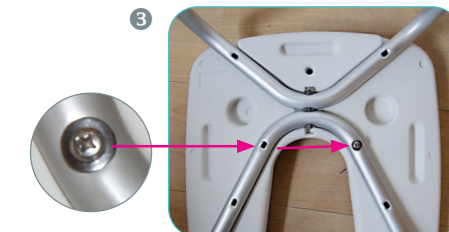
Before starting assembly, check the scope of supply for completeness. The height of the shower chair has to be adjusted at the frame (legs). Set the same height at both bases (=all 4 legs) by pushing down the brass button ❶ completely. Pull out the telescopic tube to the desired length and remove the button at the desired height leak out of the borehole. Make sure that the button is locked visibly and noticeably.



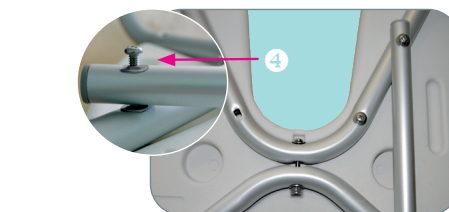
2. Move both parts of the frame together at the narrow ends and connect by using the drilled openings. One washer first, a long bolt next ❷, a second washer after and finally fit the nut. Ensure all fittings are connected tightly. Rotate the plastic seat with the bottom up wards and place the completed base in the designated recesses (see illustration).



3. Now the base frame can be screwed tightly to the seat with two short screws ❸ and one washer each.



4. The further assembly depends on the selected version: In the case of item no. 10 300, the two stabilisation bars, in the case of item no. 10 310, the two L-shaped brackets according to the illustration are screwed through the base to the seat with the remaining 4 long screws ❹ and a washer each. The installation of the shower stool item no. 10 300 is now completed, In the case of item no. 10 310, the backrest is attached to the mount brackets with the other 4 short screws and one washer each. Tighten all screws again. After examining the screw connections and the safe stand the shower stool is ready for use.



Use:

► Before each use the stool has to be checked for stability, if the ground is uneven ensure the stool is moved to a more even surface. If necessary, heat the seat with a little warm water and sit down. Ensure to be seated in the middle of the shower stool at all times to avoid a fall. Sitting down and getting out of the chair should always be aided by the carer. Now get the shower and do your personal care. After use, the seat should be rinsed to remove dirt and soap residues.

Technical data

Item No. 10 300 / Shower Stool »STANDARD with hygiene cutout« without backrest Item No. 10 310 / Shower Stool »STANDARD with hygiene cutout« with backrest			
material:	aluminium, plastic	weight:	item no. 10300: 2,05 kg item no. 10310: 2,65 kg
seat: footprint:	app. 40 x 37 cm app. 46 x 41 cm	max. capacity:	110 kg
seat height:	adjustable from 44-53 cm	lifetime:	approx. 5 years, depending on frequency of use and maintenance